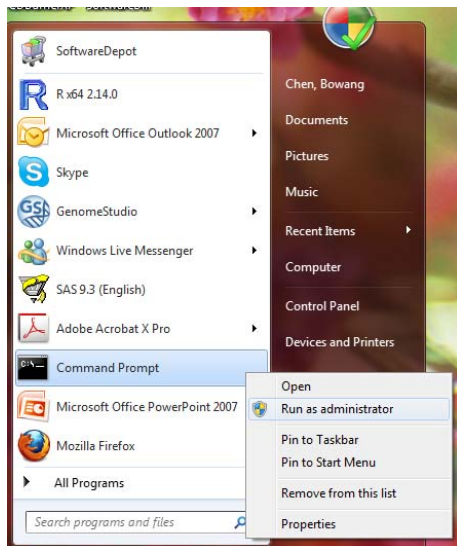


Hint: The Windows 7 64bit version saves files in different place. To know if your Windows 7 is a 32 bit or a 64 bit system, just look if you have a folder **C:\Windows\SysWOW64** in your harddisk. If yes, then your system is a 64 bit system.

for Windows XP, 2000 and Windows 7 32bit version:

Download the [Comdlg32.ocx](#) file and save it to **C:\Windows\System32**

open a Command Prompt windows as Administrator:



type the following command in the window:

```
REGSVR32 C:\Windows\System32\comdlg32.ocx
```

If you see a message like this you have successfully install it:

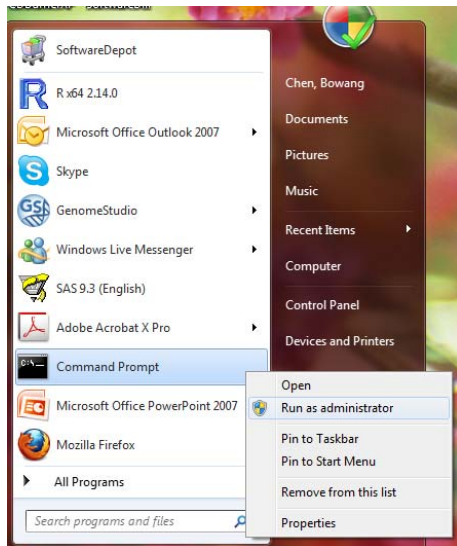
[DllRegisterServer in C:\WINDOWS\System32\comdlg32.ocx succeeded.](#)

Restart Windows, and then launch your MS-Excel again.

for Windows 7 64bit version:

Download the [Comdlg32.ocx](#) file and save it to **C:\Windows\SysWOW64**

open a Command Prompt windows as Administrator:



type the following command in the window:

```
REGSVR32 C:\Windows\SysWOW64\comdlg32.ocx
```

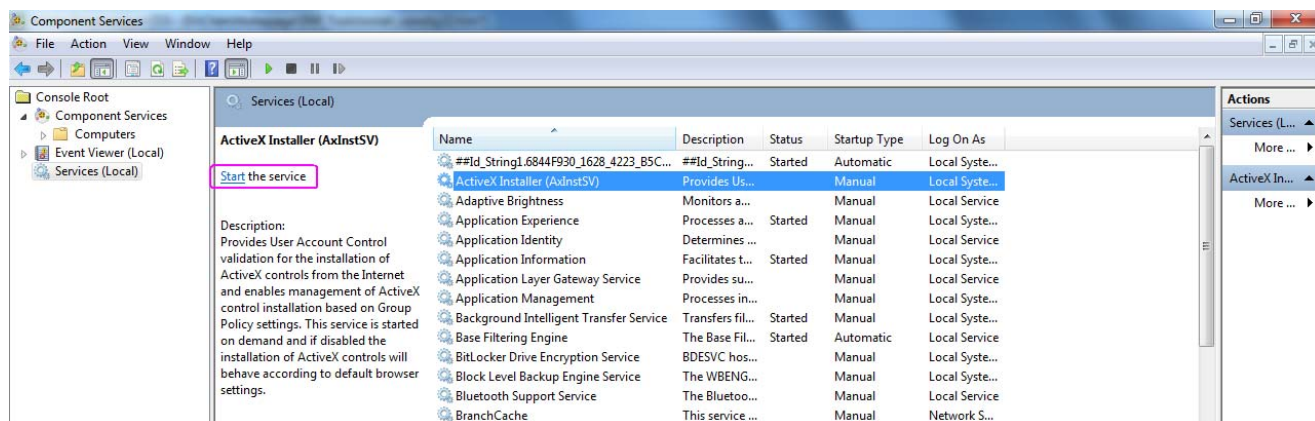
If you see a message like this you have successfully install it:

[DllRegisterServer in C:\Windows\SysWOW64\comdlg32.ocx succeeded.](#)

Restart Windows, and then launch your MS-Excel again.

if you fail in register, please start the service of "ActiveX Installer (AxInstSvc)" as administrator in the:

Start menu->Control Panel->System and security->Administrative Tools->Component Service



Then repeat register the comdlg32.ocx.

Hint:

If you have still problem in using the common dialogue to select your file, simply type you file path and name in the text box, then click the convert button.

[Go back](#)